

# FUKE Gantry Cranes







**Model**

**FK-MQ50T**

Ascending height  
**42m**

Depth of descent  
**15m**

Overall weight  
**532t**

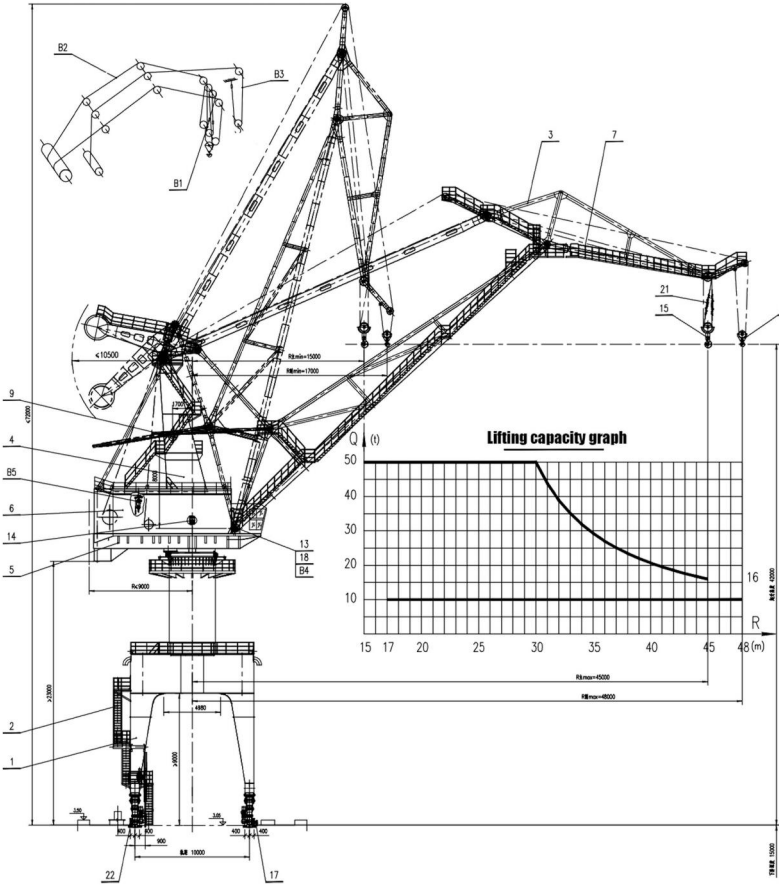
Type of power supply  
**Cable Reel**

► Data parameters

Crane working level:	A5
Main hook lifting capacity:	50/16t
Side Hook Lifting Capacity:	10t
Main hook lifting range:	15~30/15~45m
Lifting range of the secondary hook:	17~48m
Lifting height:	42m
Depth of descent:	15m
Institutional speed main rise>20t:	0.6~ 6m/min
Institutional speed main rise<20t:	0.6~ 6m/min

Mechanism speed sub-lift>4t:	1~12m/min
Mechanism speed sub-lift<4t:	1~ 24m/min
Gauge*Base Gauge:	10x12m
Gantry headroom:	>9m
radius at the rear of the turntable:	<9m
Max. wheel pressure: Working condition	300 kN
Power supply: three-phase five-wire system	380V 50Hz
Type of power supply:	cable reel
Installed capacities:	280kw

title	makings	quantities
Gantry	weldment	1
Gantry platforms and escalator railings	weldment	1
Boom and counterweight systems	weldment	1
upper column	weldment	1
turntable	weldment	1
Engine room and up-post escalator railings	weldment	1
Armature System Escalator Railing	weldment	1
main hoisting winch	mountings	1
luffing mechanism	mountings	1
rotating mechanism	mountings	1
operating organization	mountings	4
Secondary hoisting winches	mountings	1
Boom systems and pulley blocks	mountings	1
Center and electrical installation	mountings	1
50 Ton Hook Fitting	mountings	1
10 Ton Hook Fitting	mountings	1
Travel limit switches	mountings	1
Amplitude Limit Travel Switch Installation Diagram	mountings	1
Cable Reel Installation	mountings	1
Installation of setting devices and rail clamps	mountings	2
Main hook wire rope connector		2
Electrical control system s		
3 tons electric hoist	Outsourcing	1
Dry Oil Lubrication System	Outsourcing	1



安徽福客重工有限公司  
Anhui Fuke Heavy Industry Co., Ltd.

website:www.sfuke.com  
whatsapp: +8613505697380  
Address: Room 405, Building B-4, East Side  
of Dazhong Road, Cuozhen Town, Feidong  
County, Hefei City, Anhui Province