



## Anhui FuKE Heavy industry Co.

Address: Room 405, Building B-4, East side of Dazhong Road, Qizi Town, Feidong County, Hefei City, Anhui Province, China.

WhatsApp: +8613505697380

Tel: +8613505697380

Email: fuke7380@gmail.com

WeChat: 13505697380



FUKE Technology, World Quality

**RAIL-MOUNTED**

**Four-link portal crane**



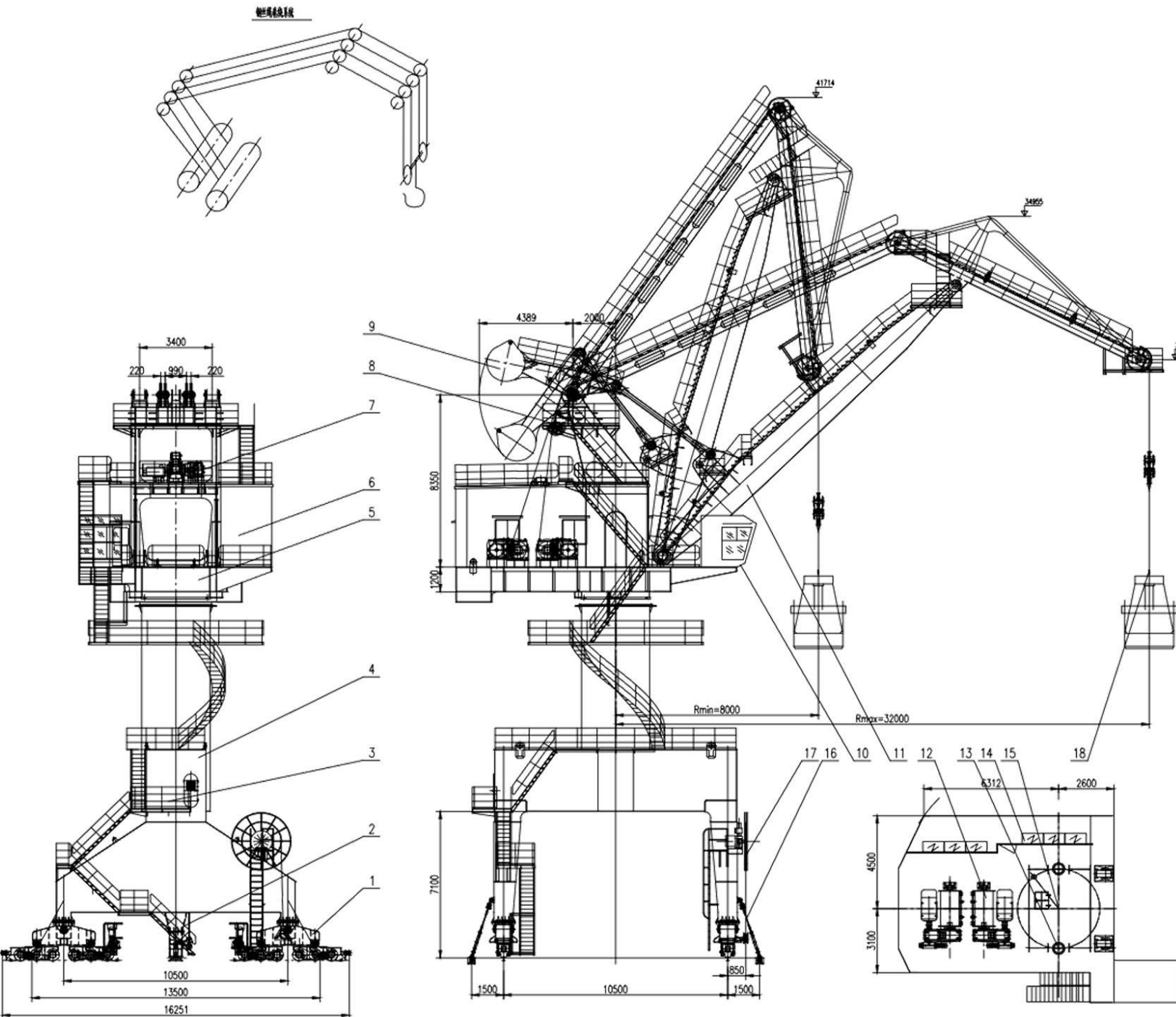
## INTELLIGENT & EFFICIENT

1:Single jib gantry crane	1 set
2: Container rotating spreader and supporting cable (automatic following)	1 set
3: Grab: (material: coal, density: 0.8~1t/m <sup>3</sup> )	1 set
Grapple: (material: limestone, density: 1.5~1.8t/m <sup>3</sup> )	1 set
3: Random tools	1 set
4: Random spare parts	1 set
5: Portable programmer	1 set
6: site test with lubricants, hydraulic oil, etc. to meet the need	
7: Random drawings and information	3 sets
8: Car stop, windproof cable support, anchoring pit support, jacking plate	1 set





## Main technical parameters



Rated lifting capacity (t)	under the hook	45t (10m~30m)
	grab	25t (10m~30m)
	spreader	35t (10m~30m)
working range (m)	range	10~30
Lifting height (m)	Above rail surface (hook work)	25
	Below rail surface (hook work)	20
	Above rail surface (grapple operation)	15
	Below rail surface (grapple operation)	20
	Above rail surface (spreader work)	20
	Below rail surface (spreader work)	20
Lifting speed (m/min)	45t under hook, 35t under spreader	25
	grab	40
	Hooks up to 30t and empty spreaders	35
Luffing speed (m/min)		30
rotation speed (rpm)		1.2
travel speed (m/min)		25
gauge (m)		10.5
Clearance height under the gantry (m)		≥6.5
Tail Counterweight Turning Radius (m)		<7.5
Crane travel distance (m)		±100m
Crane Traveling Rail Model		QU80
Center of cable reel from center of seaward track (m)		0.9
Maximum calculated wheel pressure (KN)		≤ 250





## Design conditions and natural conditions

### 1.Cargo

General cargo, bulk cargo, and 20, 40, 45-foot containers

### 2.Wind speed

Max design wind speed under working condition 20m/s

Max design wind speed under non-working condition 55m/s

### 3. Ambient temperature

Max temperature 42C (+50° C for equipment)

Min temperature -10C (-10° C for equipment)

### 4.Relative Humidity

Maximum relative humidity 100%

Average annual relative humidity 80%

### 5. Earthquakes

7 on the basic intensity scale

### 6. Power supply

Power supply: cable reel (sea side, outside)

Power supply voltage : AC380V, 50Hz,  
three-phase four-wire system

The location of the cable trench is determined by the buyer  
according to the site location

### 7. Water level and quay surface elevation

Design high water level: 21.59 meters

Design low water level: 6.46 meters

Dock surface elevation: 24.6 meters

### 8. Service life: more than thirty years