



## **FK-500C**

### **Modle**

Working weight  
**50000KG**

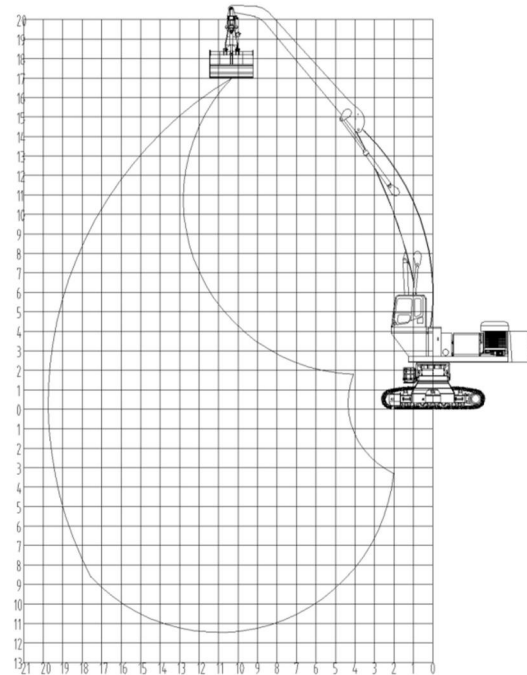
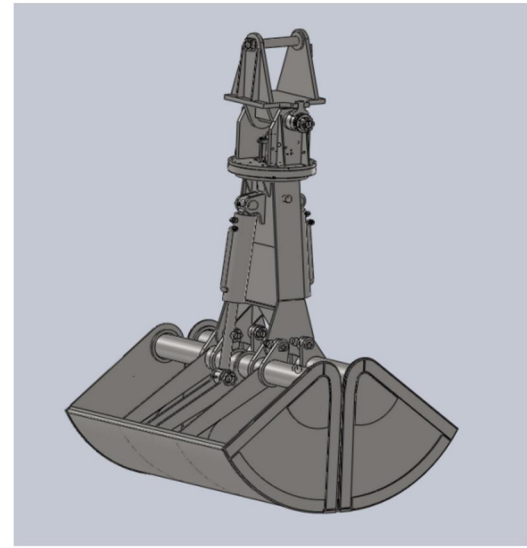
Engine Model  
**Cummins**

Engine power  
**264kw**

Engine speed  
**2100rpm**

## ► performance index

Working weight:	74500kg
Grab Bucket Volume:	1.8m <sup>3</sup>
Maximum opening size:	2480mm
Grab Bucket Empty:	2000mm
work pressure:	28Mpa
Grab rotation angle:	360°
Max. gripping height:	17000mm
Radius at max. gripping height:	10340mm
Maximum gripping radius:	19760mm
Maximum Ground Grip Radius:	19760mm
Maximum gripping depth:	11470mm
Radius at max. gripping depth:	11000mm
Length of the second arm:	9000mm
Arm length:	11000mm
Full track width with 800 track plates:	4800mm
Track plate width:	800mm
bandwidth:	4000mm
track length:	5600mm
Min. Ground Clearance:	1430mm
Counterweight height above ground:	2420mm
Tail turning radius:	5500mm
Driver's Horizontal Line of Sight:	5350mm
Fixed cab height increase:	1500mm
Cab full height:	5870mm
Cab full width:	1000mm
Engine Model:	Cummins QSL8.9-C360
engine power:	264kw
engine speed:	2100rpm
Maximum engine torque:	1500n.m
engine capacity:	8.9L
Engine Fuel Consumption Rate:	≤229g/kw.h
Engine diesel tank capacity:	440L
Motor Model:	YX3-355L1-4
Motor power:	220kw



安徽福客重工有限公司

Anhui Fuke Heavy Industry Co., Ltd.

website: [www.sfuke.com](http://www.sfuke.com)

whatsapp: +8613505697380

Address: Room 405, Building B-4, East Side  
of Dazhong Road, Cuozhen Town, Feidong  
County, Hefei City, Anhui Province