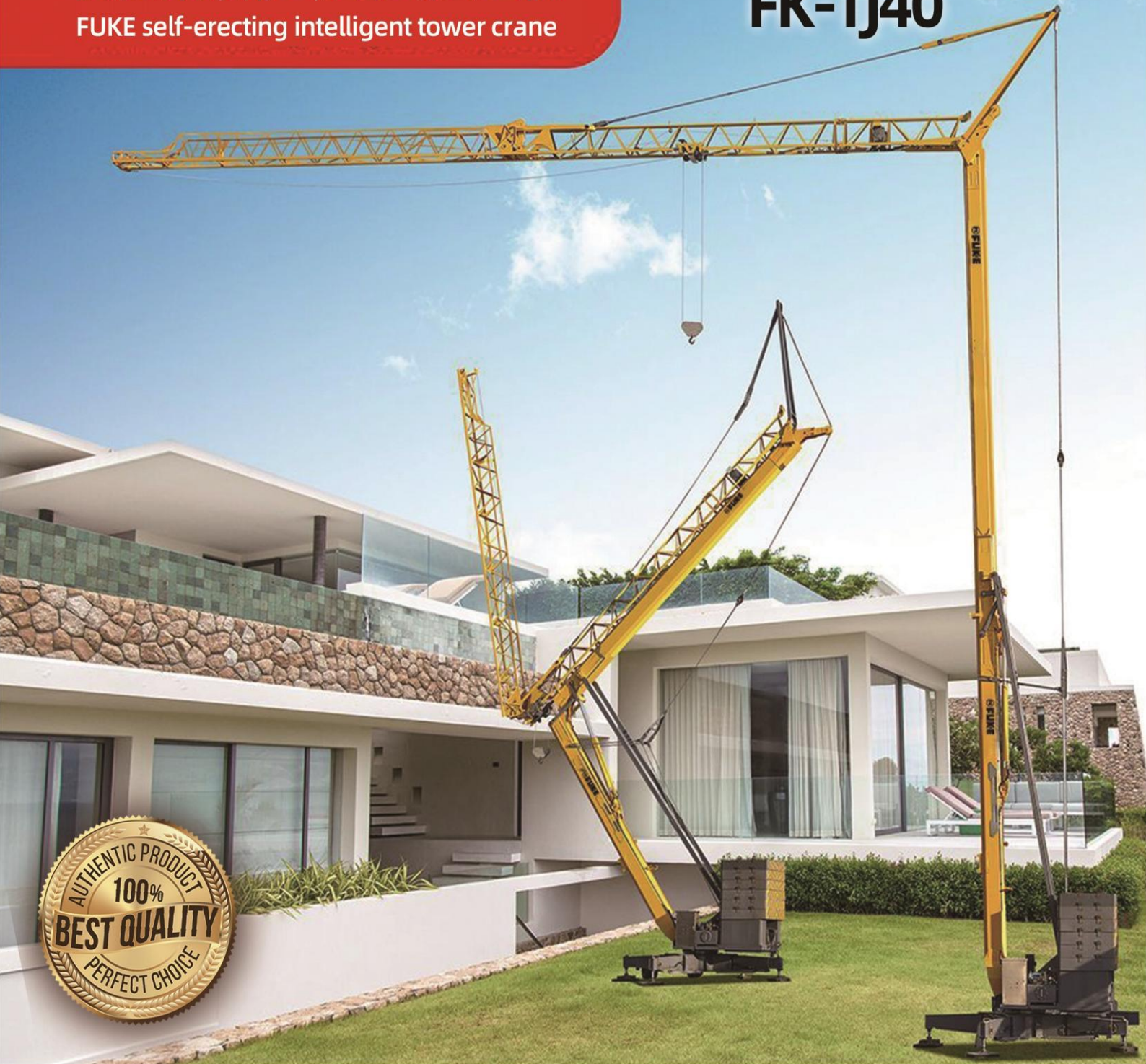


快速架设移动塔式起重机

FUKE self-erecting intelligent tower crane

FK **FUKE** 福客®

FK-TJ40



FUKE FK-TJ40

Basic Information

Slewing speed

0.25/0.6 r/min

Max. hoisting height

22m

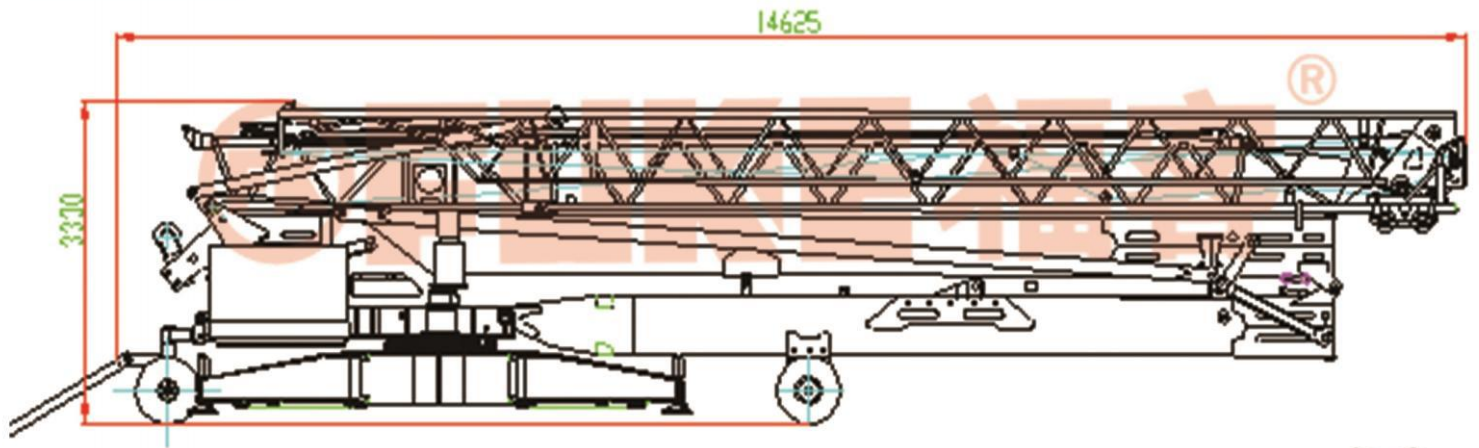
Trolleying speed

20/40m/min

Max. hoisting weight

4000kg

Outline



Technical Specification

Model	FUKE FK-TJ40			
Max. hoisting height	22 m			
Max. working radius	27 m			
Max. hoisting weight	4000 kg			
Lifting speed(2 times)				
Lifting capacity (Kg)	2000	2000	800	
speed(m/min)	9	36	56	
Lifting speed(4 times)				
Lifting capacity (Kg)	4000	4000	1600	
speed(m/min)	4.5	18	28	
Trolleying speed	20/40 m/min			
Slewing speed	0.25/0.6 r/min			
Erecting time	10 min			
Outrigger span	4.2x4.2 m			
Max. towing speed	15 Km/h			
Hydraulic system	28 Mpa			
Power supply	380V/50Hz			
2timeAmplitude (m)	9	12	16	20
Lifting weight (Kg)	2000	2000	2000	1600
4timeAmplitude (m)	9	12	16	20
Lifting weight (Kg)	4000	2900	2100	1600



*We follows the principle of continuous improvement Product performance parameters will be partially changed due to technical improvements without prior notice.

